

NORTHOLT GREEN RING

visionsfornortholt.co.uk



Focus Area interventions:

Route wider interventions:

- 1 Belvue Wetlands
- 2 Foraging Passageway
- 3 Rowdell Road Crossing
- 4 Ecology Art Mural
- 5 Marnham Footbridge

- Trees / Foraging
- Signage/ Wayfinding
- Map / Information & View Points
- Furniture
- Crossings

- Emerging Highways, Public Realm and Active Travel improvements
- New crossings being delivered as part of emerging Highways, Public Realm and Active Travel improvements

Welcome

Share your feedback on proposals for developing a 'Green Ring' in Northolt. We look forward to receiving your ideas and comments! The designs presented here are draft. Your feedback will shape the final proposals. All engagement findings will be published on our website.

What is the Green ring Project?

Ealing Council was awarded £746,125 from the Mayor of London's Green and Resilient Spaces Fund to help connect the 6 parks in Northolt with a 6.3km walking and cycling route, making green spaces in the borough more accessible to residents. With this new route, residents will be able to enjoy a healthy and active lifestyle, whether by walking, scooting or cycling.

The grant will help to start a series of projects to improve the environment along the 'Green Ring' route. The improvements include proposals to install new signage, information points and outdoor furniture, as well as new seasonal ponds in Belvue Park to prevent flooding, an ecology themed art mural, passageway improvements and a new pedestrian and cycling crossing on Rowdell Road.

The Green Ring was identified in the Northolt Future Neighbourhood Strategy 2030 published in November 2022. It forms part of a wider active and sustainable travel network for Northolt, as set out in the Community-led 20-minute Neighbourhood Framework. The project will complement the planned improvements to Ealing, Kensington, Church and Mandeville Roads. The project is further financially supported by Thames Water and Dawoodi Bohras Mosque, as well as being supported by local partners Belvue High School and the Canal & River Trust.

When is this planning to happen?



Scan for further details!

For further project updates scan the QR code or visit: visionsfornortholt.co.uk



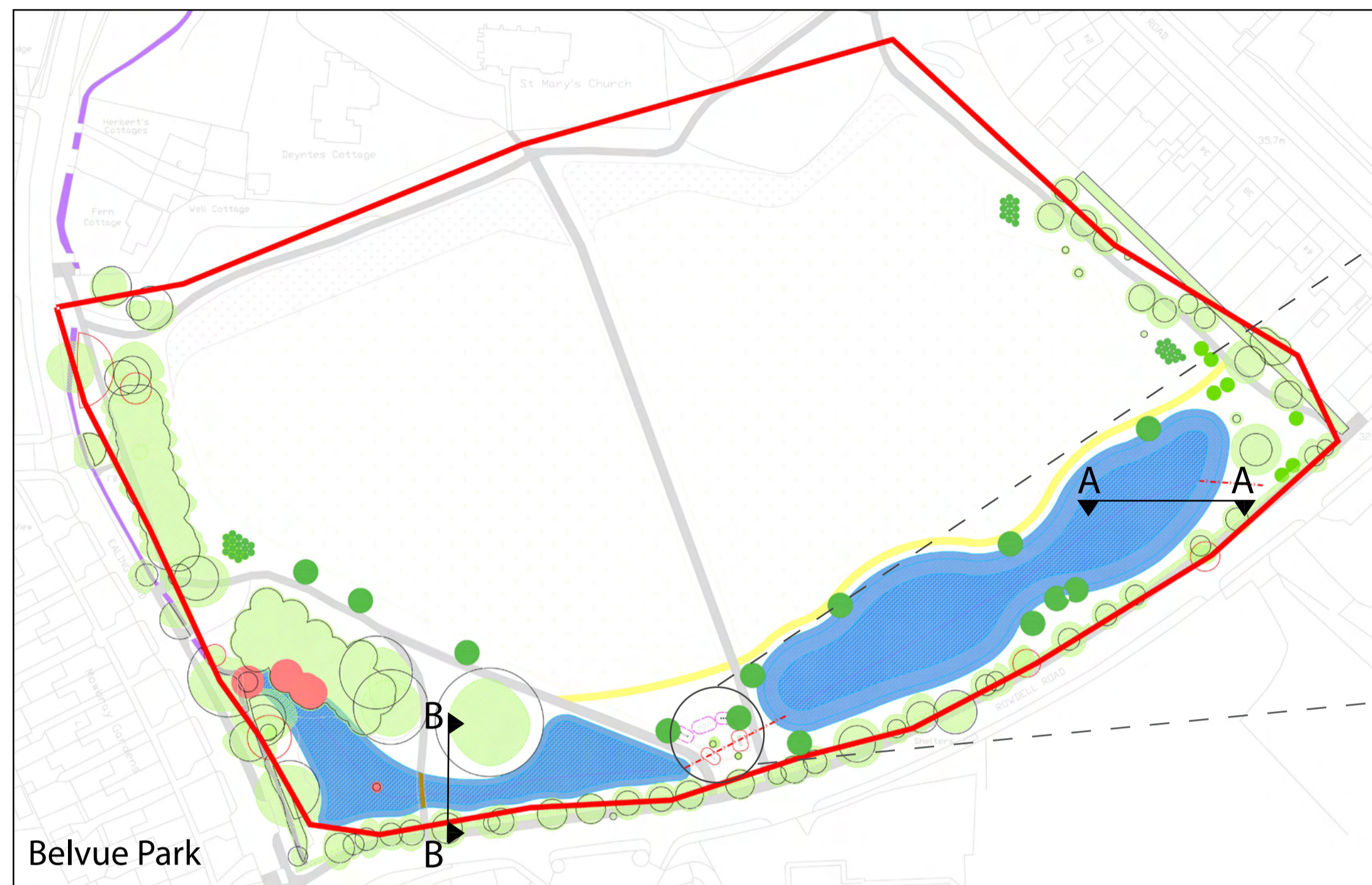
VISIONS FOR NORTHOLT

SUPPORTED BY
MAYOR OF LONDON



NORTHOLT GREEN RING, BELVUE PARK

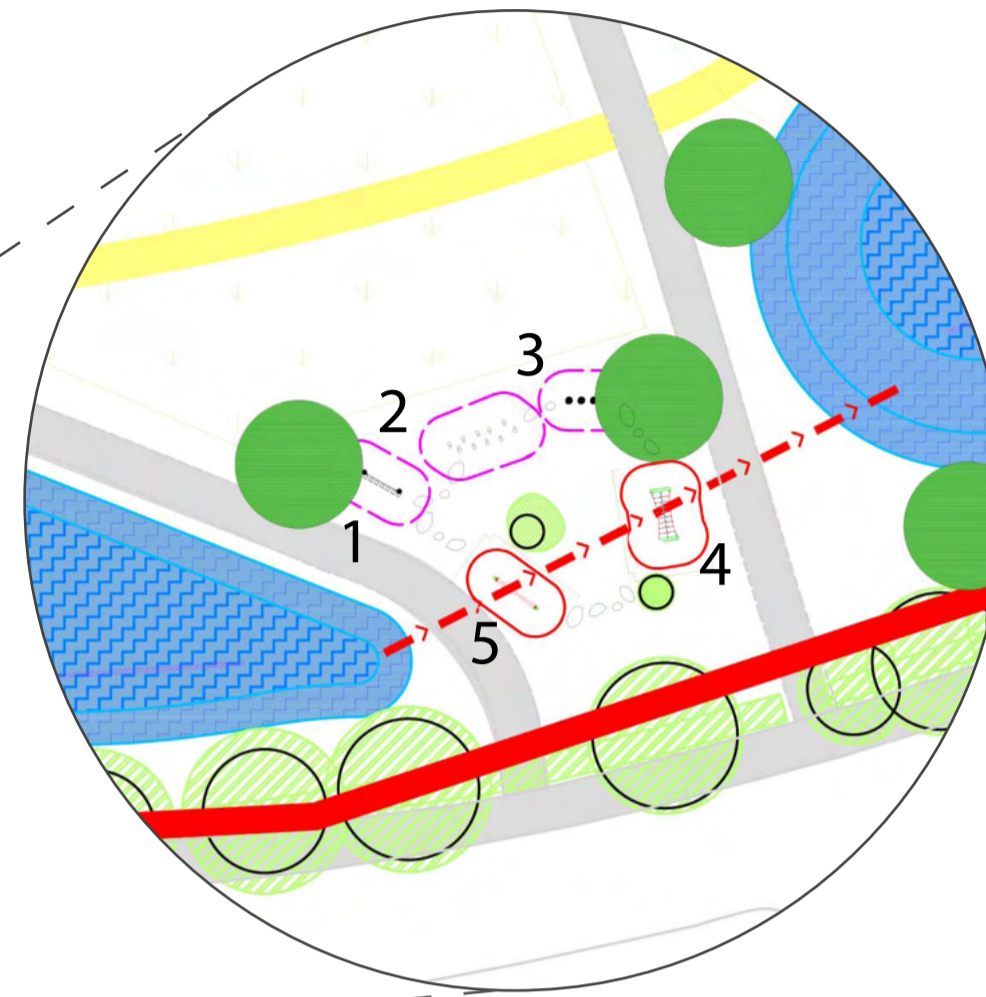
visionsfornortholt.co.uk



The vision for development of the open space in Belvue Park, is to work alongside Thames Water to implement a flood alleviation scheme to reduce the surface water flood risk to the south-west corner of the park and the surrounding Ealing Road and Rowdell Road. Whilst this scheme is being developed there is an opportunity to increase the biodiversity of planting and habitat creation in the Park.

- The swale and attenuation feature has been formed to allow for the drainage / water volume requirements whilst creating a naturalistic shape that is in keeping to the park setting and maximising the wildlife value.
- The existing trees have been carefully considered when the swale / attenuation shape was being formed to impact on as few trees as possible.
- The general arrangement plan (above) illustrates the design intention for the swale and attenuation basin. New tree planting is indicated to offset any trees removed for the scheme to be implemented.
- An additional footway is being introduced around the eastern side of the swale linking into the existing pedestrian network.
- A new boardwalk to the middle of the swale will be built to allow for pedestrian access.
- A wetland wildflower seed will be introduced, and new meadow created to the north to offset any meadow lost to facilitate the SuDS scheme.

Natural play in the park



1. Climbing log



2. Stepping Stilts



3. Play Mushrooms

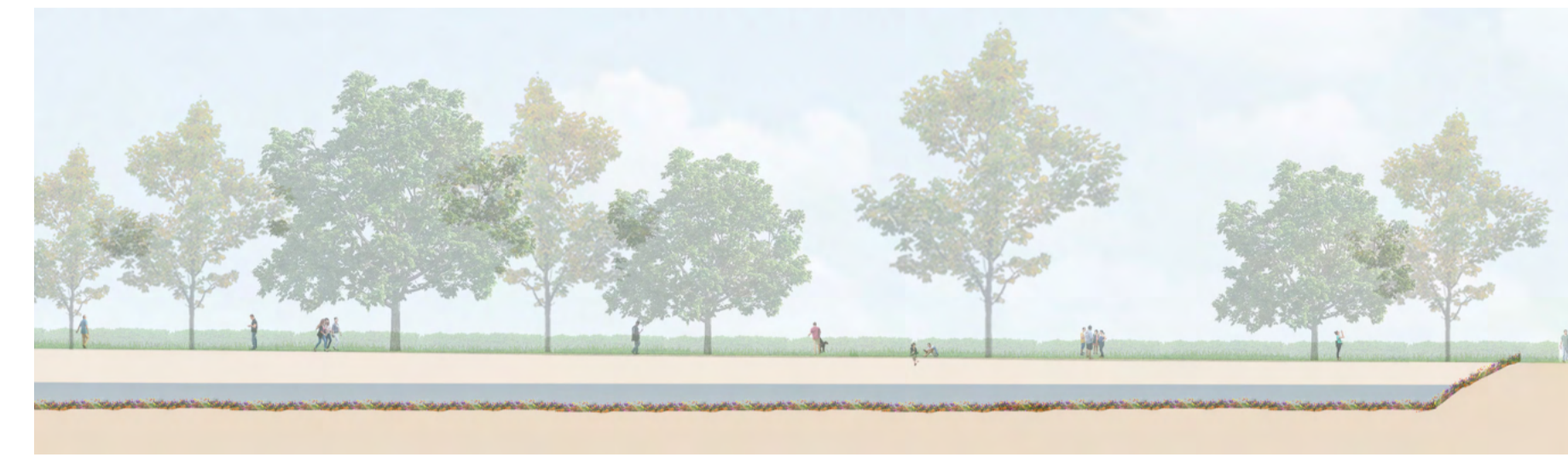


4. Chain Bridge



5. Rotating Balance Beam with Rope

Proposed swale and attenuation basin



Section AA



Precedent image



Section BB



Precedent image

Flood resilient tree planting



Black Alder,
Alnus glutinosa



River Birch,
Betula nigra



White willow,
Salix alba



Black poplar,
Populus nigra

NORTHOLT GREEN RING, PUBLIC ART

visionsfornortholt.co.uk



★ Art stops to date

★ Sites identified by artists and local people

The Green Ring has the opportunity to form an important part of a wider public art strategy for Northolt, whilst creating a series of artworks that connect key green spaces in Northolt through this designated green walking route.

Through engagement sessions with the local community throughout 2022, sites were identified for public and community art interventions in Northolt. A series of Art Stops have been designed and installed working with local artists and schools in the area and have now launched in September 2023. These pieces form the first public art intervention within Northolt and are a step in the direction of building Northolt's public art offer, the pieces have been well received locally with an artist walking tour and supporting information available online Projects - Art Stops (visionsfornortholt.co.uk).

The Green Ring route will encourage residents and visitors to explore and enjoy the parks and green spaces in the area and the introduction of public art can bolster their engagement with destinations along the route whilst connecting to key themes for Northolt and its community.

Themes



Identity & History



Celebrating Heritage

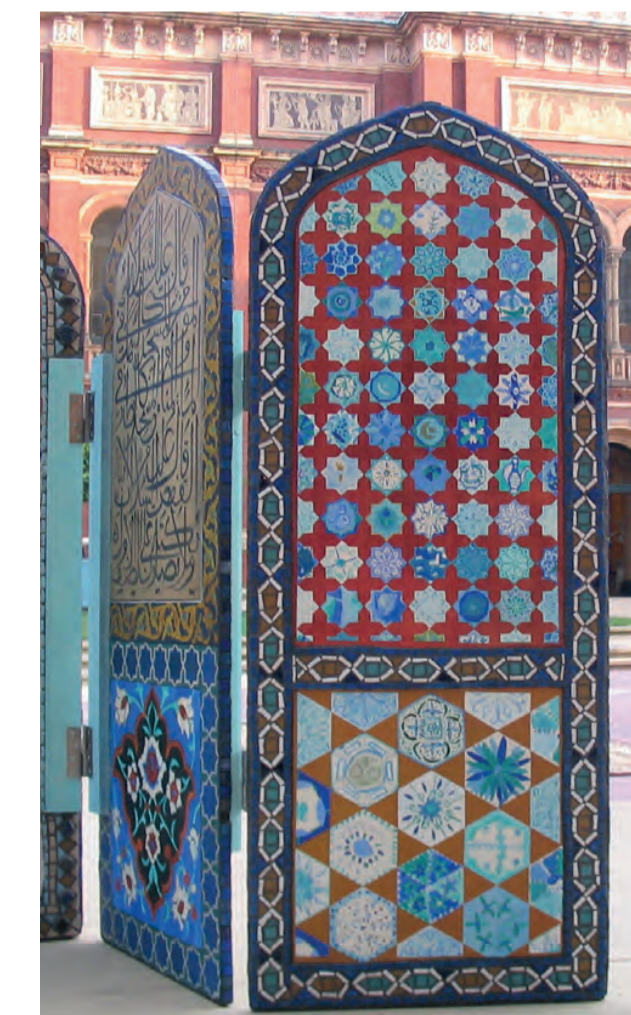


Green Space Heritage



Northolt's People & Diversity

As a series of art work is designed, developed and installed for Northolt, an Art Strategy for the area has identified key themes through a wide range of ideas, feedback and local conversations. These themes serve as an initial source of inspiration to guide artists and creatives in their artwork interventions and have been identified as relevant in particular locations throughout the town.



Art Stops to Date



1. Errol Donald, Northolt Leisure Centre



2. Jane Ruhland, Islip Manor Park entrance



3. Samira Mian Visions for Northolt branding and illustrations



4. Lazfar -Levi Richards Eastcote Lane North garages

NORTHOLT GREEN RING, WAYFINDING

visionsfornortholt.co.uk



 Wayfinding/ signage along the Green Ring

Wayfinding is proposed for the route, including the installation of signposts that guide individuals to access the parks and the Grand Union Canal from Church Road and Kensington Road. A graphic identity will be developed to signify the Green Ring route, this will play an important role alongside the physical interventions of the Green Ring in order to promote the route and expand the project's reach and visibility.

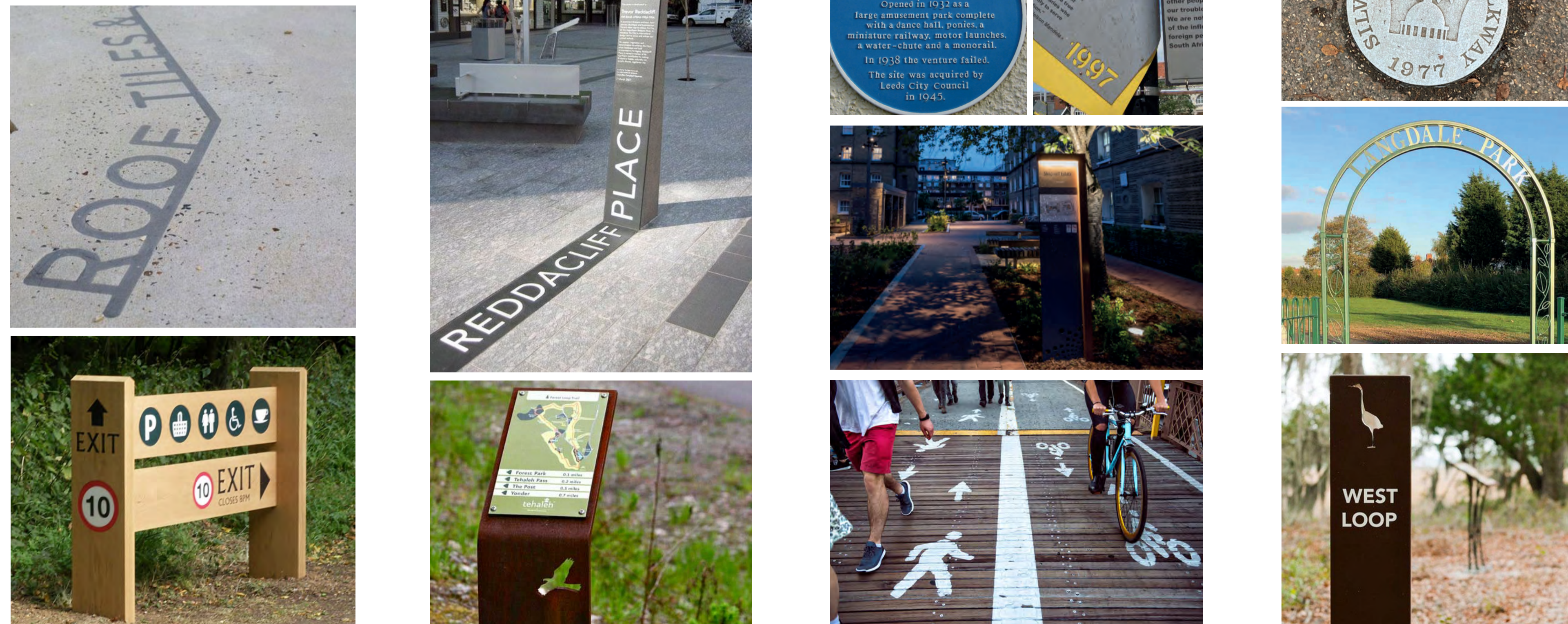
Well-designed signage would enhance wayfinding and make it easier for people to navigate the route of the Green Ring and to discover these recreational spaces that are available locally for leisure use and encouraging people out into nature.

There may be an opportunity to support local procurement and to plug in to green space improvement projects across the borough in order to maximise the impact of the wayfinding within Northolt and to connect the

Wayfinding locations on the Green Ring route



Precedents for route wide interventions



VISIONS FOR NORTHOLT

SUPPORTED BY
MAYOR OF LONDON



It's everyone's water