

### WELCOME

Share your feedback on proposals for developing a 'Green Ring' in Northolt. We look forward to receiving your ideas and comments! The designs presented here are draft. Your feedback will shape the final proposals. All engagement findings will be published on our website.

### WHAT IS VISIONS FOR NORTHOLT?

Visions for Northolt is putting local people in the driving seat of change. In 2021, over 300 local people helped to develop a community-led vision for the future of Northolt. We are now working together to deliver this vision.

### HOW MUCH FUNDING HAS BEEN SECURED?

Ealing Council has secured £746,125 from the Mayor of London's Green and Resilient Spaces Fund to improve Northolt's walking and cycling network and green spaces!

### WHERE IS THIS FUNDING FOR?

The funding is to develop 6.3km circular route - the Northolt Green Ring - which will connect and enhance Northolt's green spaces.

The Green Ring was identified in the Northolt Future Neighbourhood Strategy 2030 published in November 2022. This was developed with local partners; Building Bridges, Viking Primary School and Tree's for Cities. The strategy sets out an area wide plan for community-led climate action projects with the Green Ring at the centre connecting them all. This funding is for the first phase of implementing the walking and cycling route and establishing some initial projects.

The Green Ring forms part of a wider active and sustainable travel network for Northolt, as set out in the Community-led 20-minute Neighbourhood Framework. It will complement the improvements underway to Ealing, Kensington, Church and Mandeville Roads.

### WHAT IS THIS FUNDING FOR?

This funding is for improvements to green and blue spaces and the wider public realm to help tackle climate resilience, increase biodiversity, improve access to green space, build green skills and promote health and wellbeing.

### WHY WAS THIS AREA SELECTED?

Northolt's parks were identified by local people as a key local asset and many would like to see these celebrated, activated and enhanced with safe and more attractive routes to access them. The Green Ring will connect and enhance these spaces.

## JOIN THE CONVERSATION

Wizje dla Northolt  
Dołącz do rozmowy

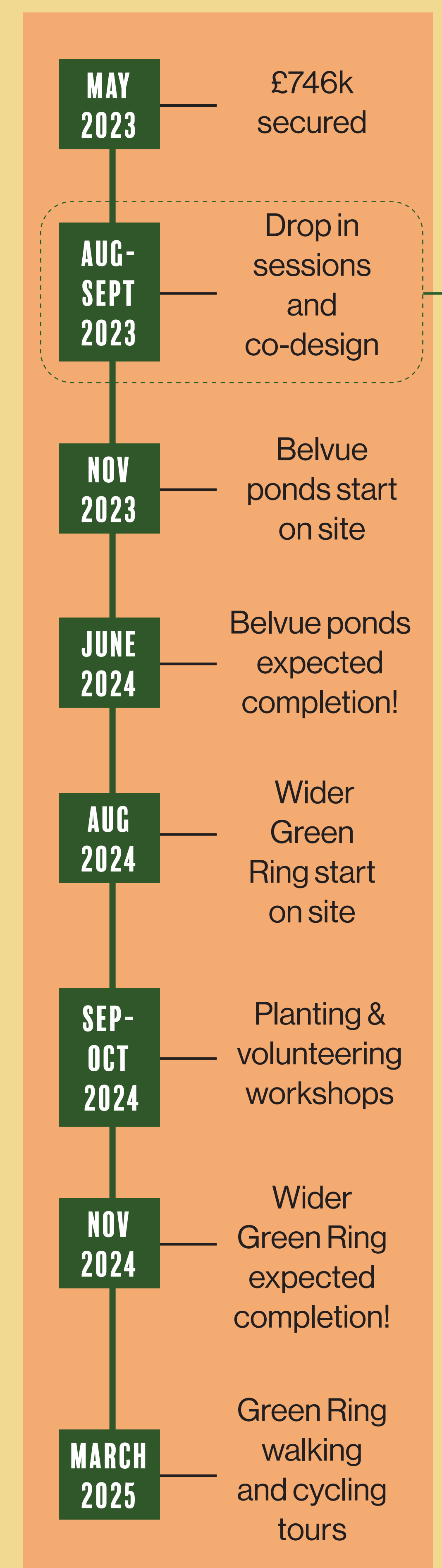
நோர்ட்ஹோல்ட்டிற்கான தொலைநோக்குகள்  
உரையாடலில் சேரவும்

## SCAN TO GIVE YOUR FEEDBACK!

Please share your feedback by filling in a short survey by the **31st August 2023**. For further project updates visit: [visionsfornortholt.co.uk](https://visionsfornortholt.co.uk)



### WHEN IS THIS PLANNED TO HAPPEN?



We are here



## Proposed route wide interventions:

### Signage

Wayfinding and branding across the Green Ring, with signposts and lettering in paving



### Map / Information & View

Information boards and installations to support learning and engagement with local ecology and biodiversity



### Furniture

New seating and bins for resting and enjoying nature



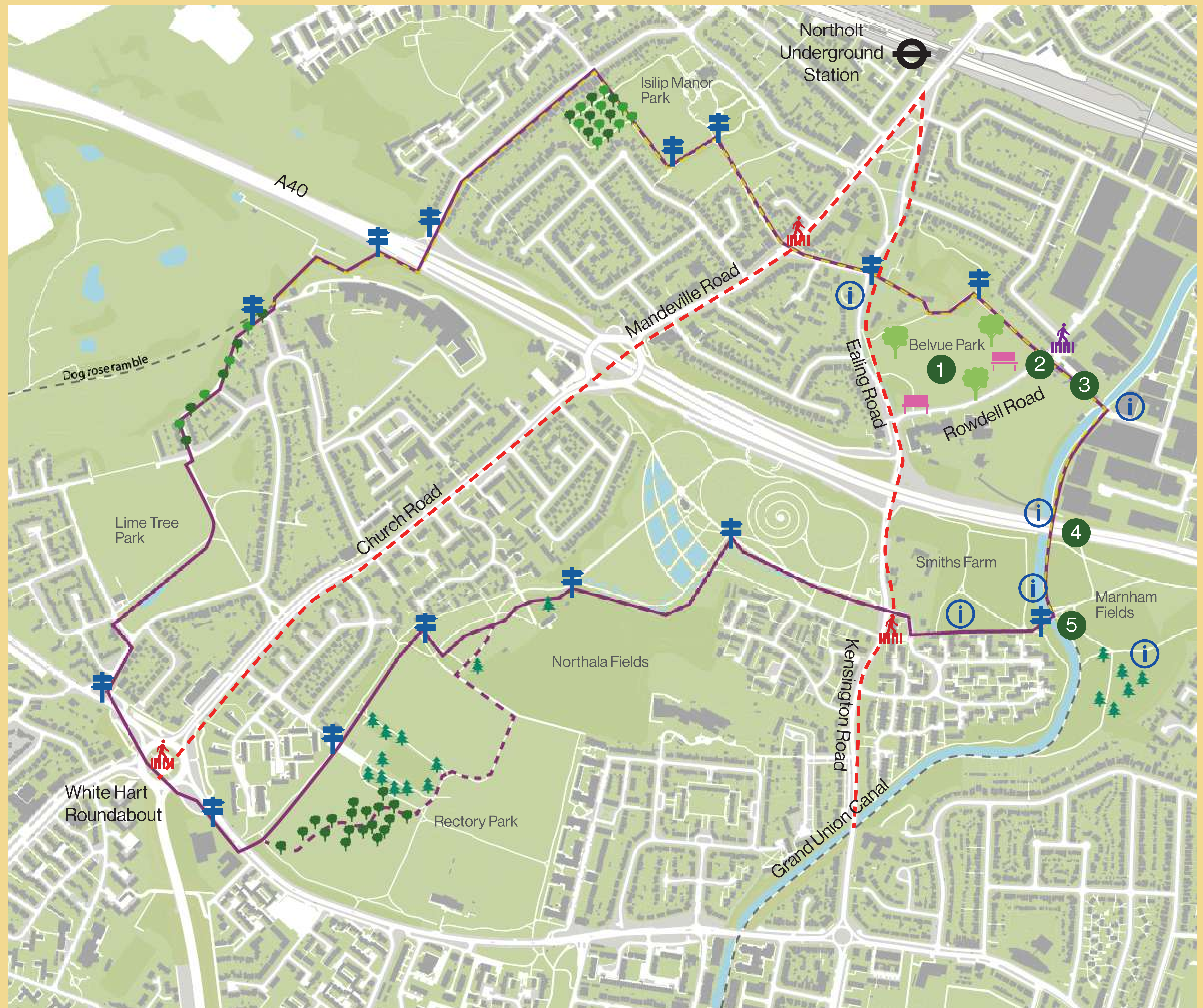
### Crossings

New road crossings for pedestrians and cyclists



### Trees / Foraging

New greenery including edible planting to support local food production




## Focus Area interventions:

- 1 Belvue Wetlands
- 2 Foraging Passageway
- 3 Rowdell Road Crossing

- 4 Ecology Art Mural
- 5 Marnham Footbridge

--- Emerging Highways, Public Realm and Active Travel improvements

 New crossings being delivered as part of emerging Highways, Public Realm and Active Travel improvements



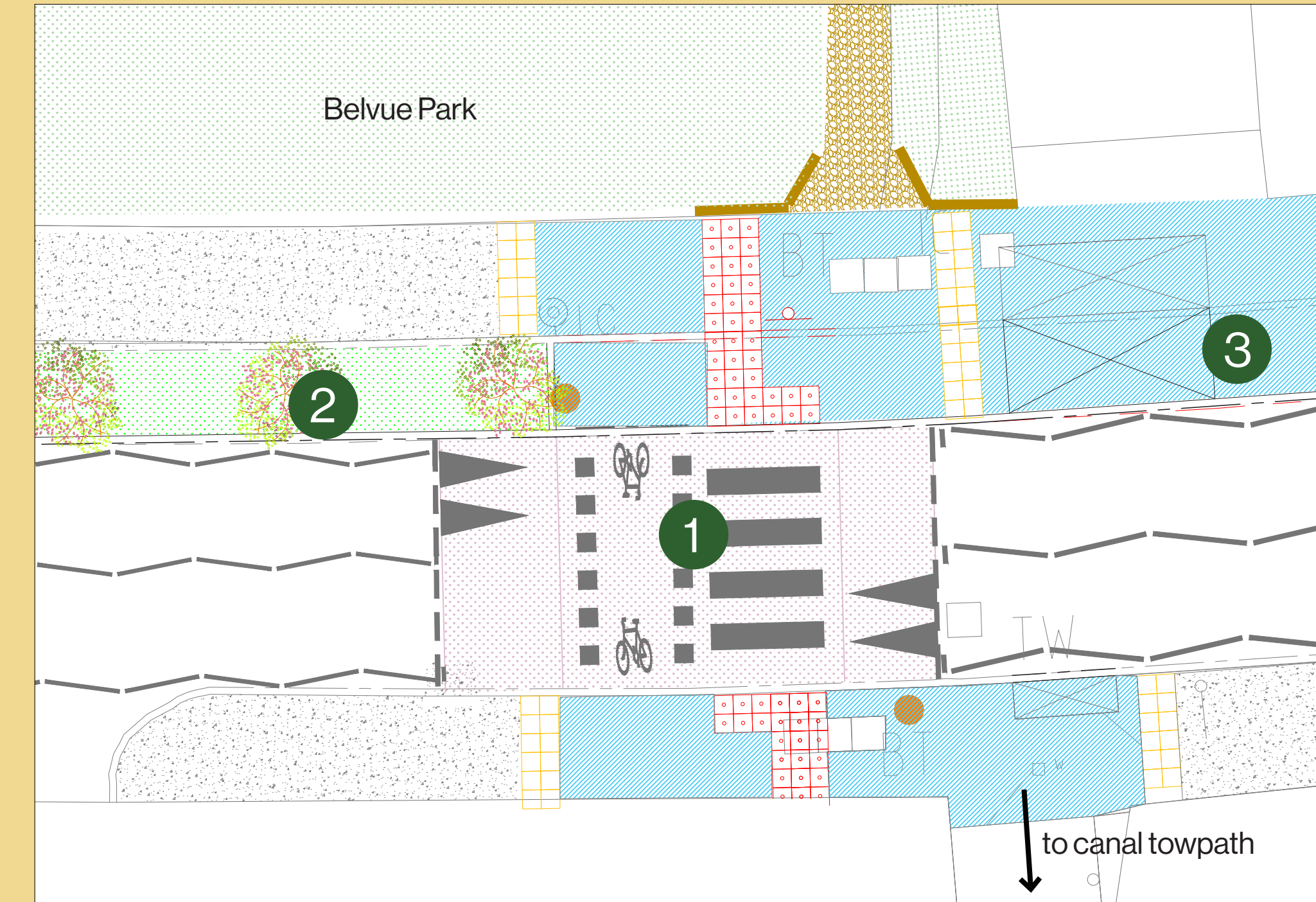


## BELVUE WETLANDS

1. New ponds/ swales for water attenuation to help tackle flooding
2. Retaining existing trees
3. New tree planting
4. New pathways completing the circular route around the park
5. New boardwalks and bridges
6. Meadow/wild flower planting to increase biodiversity
7. New seating areas
8. New natural playspaces amongst planting and tree canopy areas
9. Improved road crossing and access at Rowdell Road
10. Wider opening up and naturalising (removing concrete infrastructure) the water course in Northolt Village to allow for increased drainage and new planting



Flood event August 9th 2021, photo taken outside Belvue High School



## ROWDELL ROAD CROSSING

1. New raised crossing to connect the park and towpath, slow traffic and make crossing easier
2. Sustainable drainage and greening to replace parking spaces
3. Footpath widened to reduce crossing distance. Existing driveway extended over widened footpath



## FORAGING PASSAGEWAY

1. New fencing with bird / wildlife nesting boxes
  2. Green verge with climbing plants and foraging species
  3. 'Green Ring' wayfinding
  4. Improved pavement treatment
- (Subject to landowner approvals)

## ECOLOGY MURAL

- Ecology Mural, a new public artwork along the canal underpass.
- (Subject to landowner approvals)

